

# Sustainable Timber Tasmania



## Key points

- Sustainable Timber Tasmania is responsible for sustainably managing Tasmania's Permanent Timber Production Zone land.
- Our key purpose is to sustainably supply high quality native forest and plantation sawlogs and other forest products to customers.
- We are committed to sustainably managing the forest estate, sustainably supplying timber and sustainably growing our business.
- Our core activities are inherently sustainable by nature. Sustainability is at the heart of everything we do. It is our long-term future.

## Who we are

Sustainable Timber Tasmania is a Tasmanian Government Business Enterprise responsible under State legislation for:

- sustainably managing approximately 800,000 hectares of public production forest (Permanent Timber Production Zone land)
- undertaking forest operations for the production and sale of forest products from these forests (including making available at least 137,000 cubic metres of high quality eucalypt sawlogs and veneer logs per annum).

## What we do

To deliver these outcomes, Sustainable Timber Tasmania's core activities as agreed with the Government include:

- land and native forest management;
- sale of forest products;
- fire management; and
- forestry road construction and maintenance.

In support of these core activities, Sustainable Timber Tasmania also undertakes the following other activities:

- commercial establishment, pruning, thinning and fertilising of hardwood plantations;
- nursery operations at Perth to produce eucalypt and radiata pine seedlings for planting in its own plantations, and also for sale to other landowners;
- negotiation and management of harvesting and transport contracts with external parties to allow Sustainable Timber Tasmania to sell timber on a mill door basis;
- management of the Newood Huon site;
- direct sales of special species timber on commercial terms;
- maintaining reliable and commercially viable market access for harvesting residues; and
- provision of professional and technical services to external customers on commercial terms to capitalise on the specialist expertise held within Sustainable Timber Tasmania's staff and on its intellectual property.

## Our Strategic Direction

Sustainability is at the heart of everything Sustainable Timber Tasmania does. It's the long term future for our business. It includes:

- Sustainably managing the forest estate;
- Sustainably supplying timber; and
- Sustainably growing our business.

To be successful in each of these areas, Sustainable Timber Tasmania will be focusing on:

- Delivering effectively – building a sustainable, effective and consistent business that is valued by our customers and shareholders;
- Developing capability – investing in our business and our people, and promoting an educated, skilled and safe contractor workforce with capabilities for the future;
- Leading and innovating – embracing new ideas and realising opportunities, and fostering an innovative culture that supports ongoing development of the Tasmanian forest industry;
- Growing value – investing in strategies and initiatives that grow and realise the full value of the forest estate and the services we provide; and
- Listening and engaging – building trust and confidence with our stakeholders and the community through genuine communication, engagement and being a good neighbour.



## Corporate Objectives

Sustainable Timber Tasmania aims to:

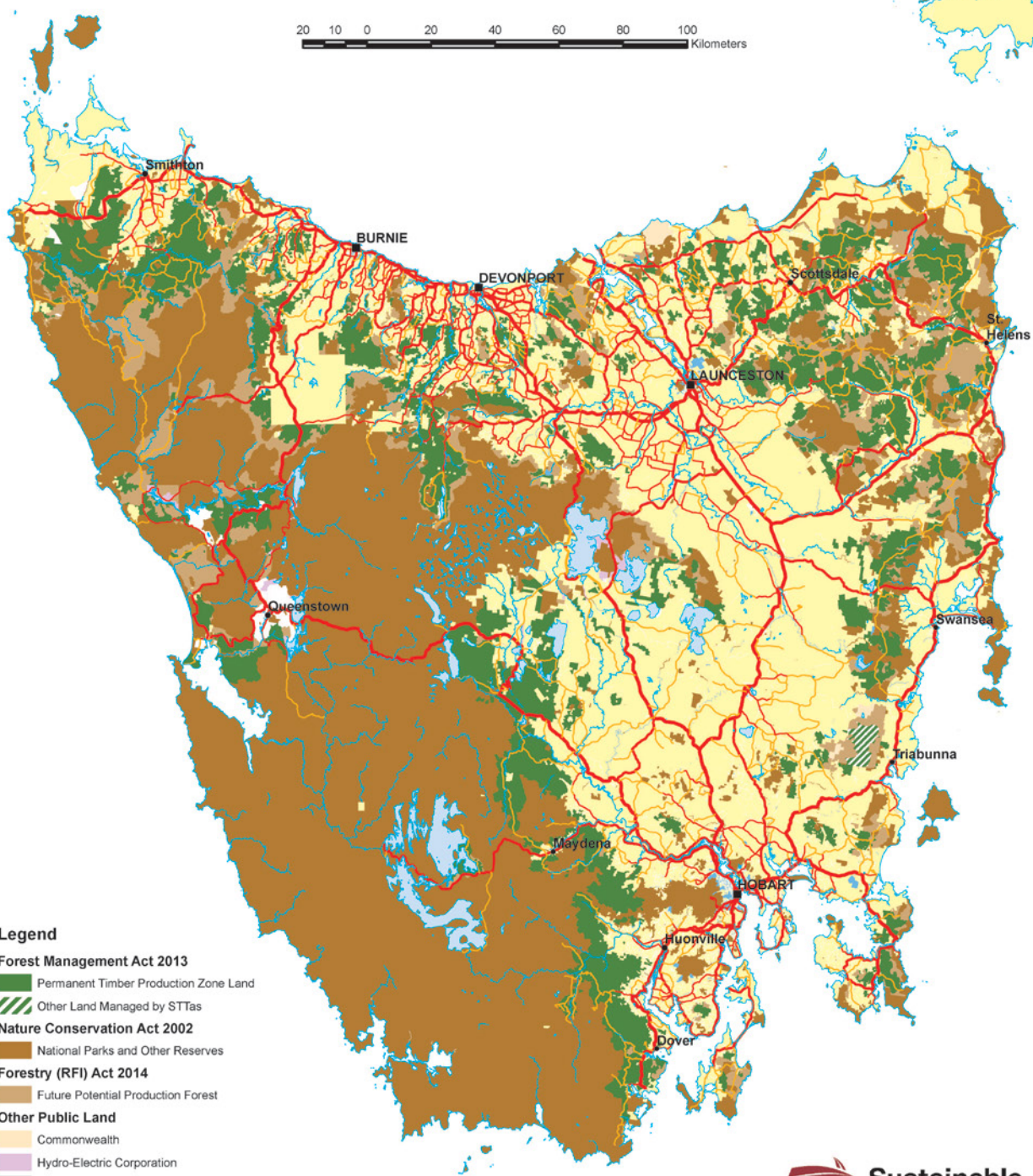
- Achieve and maintain financial sustainability for Sustainable Timber Tasmania;
- Efficiently and effectively make available agreed wood volumes and other services to our customers;
- Professionally manage public production forests to maintain wood resource and other environmental, cultural and economic values; and
- Achieve zero harm to our people and contractors.

Our forest management is currently certified under the Responsible Wood Standard which is recognised, under the Programme for the Endorsement of Forest Certification, as being an independent assurance of legal and sustainable timber supply. We are also in the process of seeking certification for our operations under Forest Stewardship Council® standards.





## DISTRIBUTION OF PERMANENT TIMBER PRODUCTION ZONE LAND IN TASMANIA



**Legend**

- Forest Management Act 2013**
- Permanent Timber Production Zone Land
- Other Land Managed by STTas
- Nature Conservation Act 2002**
- National Parks and Other Reserves
- Forestry (RFI) Act 2014**
- Future Potential Production Forest
- Other Public Land**
- Commonwealth
- Hydro-Electric Corporation
- Crown Land
- Local and Water Corporations
- Other Land**
- Private Freehold



Copyright © Sustainable Timber Tasmania 2017.

